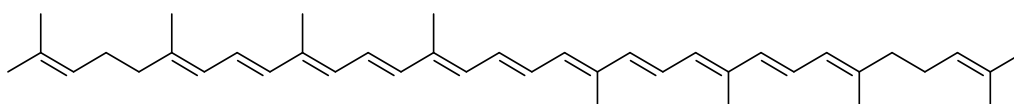




## DATA SHEET

<b>Trivial Name</b>	<b>Lycopene</b>
<b>Semi-systematic Name</b>	$\psi,\psi$ -Carotene



Empirical Formula	Molecular Weight	Product Number	Date
C <sub>40</sub> H <sub>56</sub>	536.89	0031	2023.03.27.

<b>Appearance (Color, Form)</b>	Red crystals
<b>Source</b>	Chemical synthesis
<b>Melting Point</b>	172 °C

UV/VIS	Solvent	$\lambda_{\max}$ (nm)	A(1%,1cm)	%III/II
	Hexane / 2% CH <sub>2</sub> Cl <sub>2</sub>	444		80
		472	3550	
503				

HPLC	<b>Purity % (peak area)</b>	96.6
	<b>Stationary Phase</b>	YMC C <sub>30</sub> 3 $\mu$ m

<b>Properties</b>	<b>Non-toxic, pure, crystalline, contains no biological impurities</b>
<b>Remarks</b>	<b>For analytical purpose only, not for human consumption Store at ca. -20°C</b>

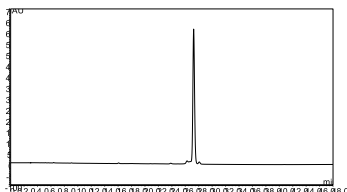


HPLC

Lycopene

Date: 2023.03.27.

450nm



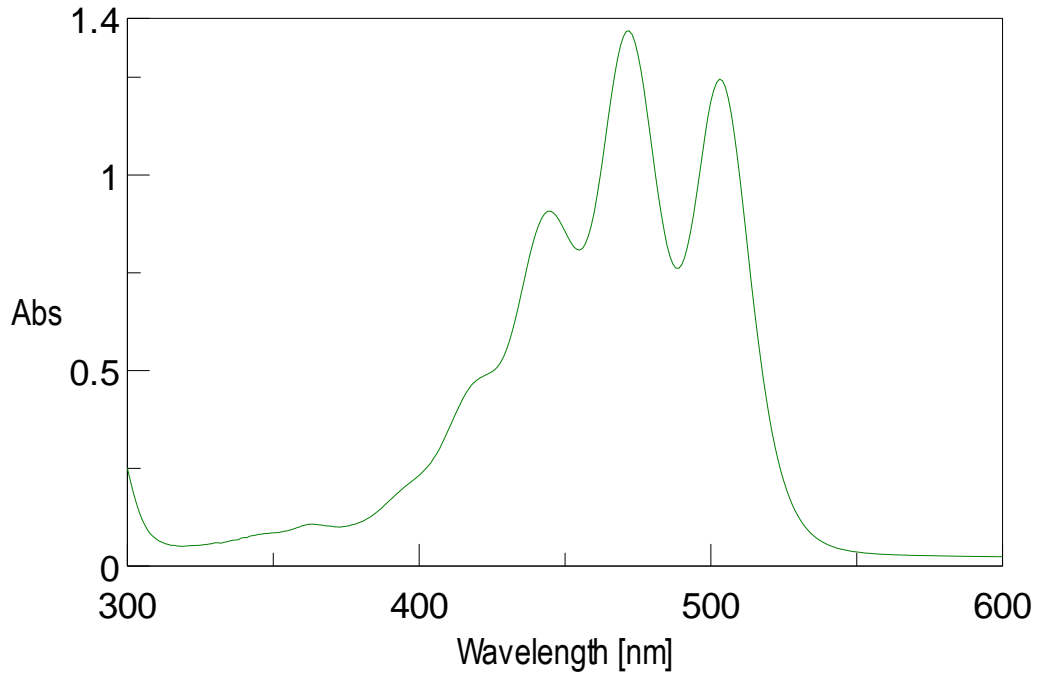
	RT	% Area
1	16.08	0.36
2	23.84	0.49
3	26.26	1.26
<b>4</b>	<b>27.25</b>	<b>96.62</b>
5	28.09	1.27



UV/Vis

Lycopene

Date: 2023.03.27.



Solvent: Hexane / 2% CH<sub>2</sub>Cl<sub>2</sub>

$\lambda_{\max.}$ (nm) : 444 472 503

$A_{1\%,1\text{cm}}$  : 3550