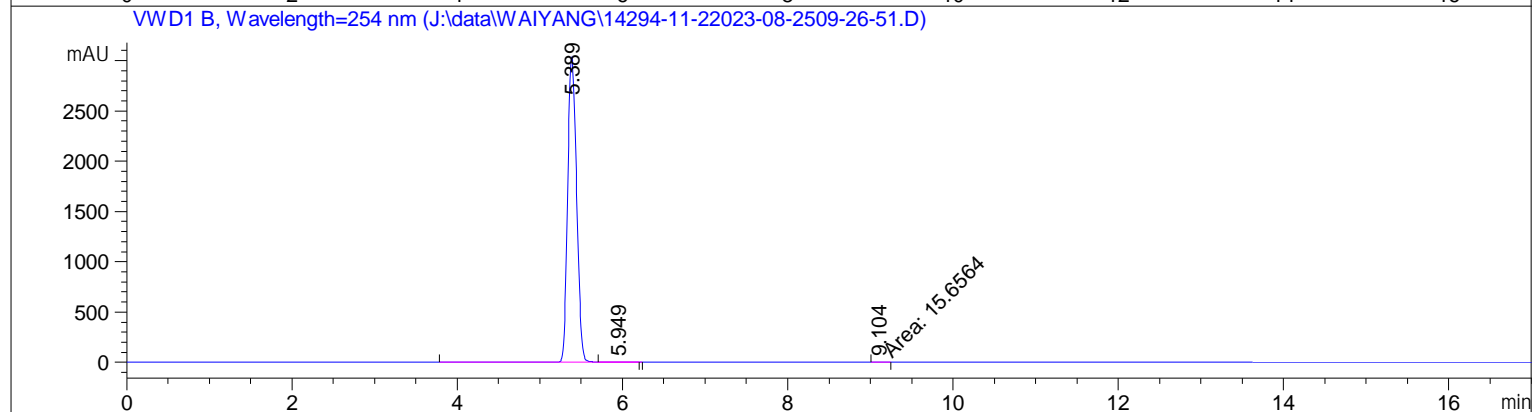
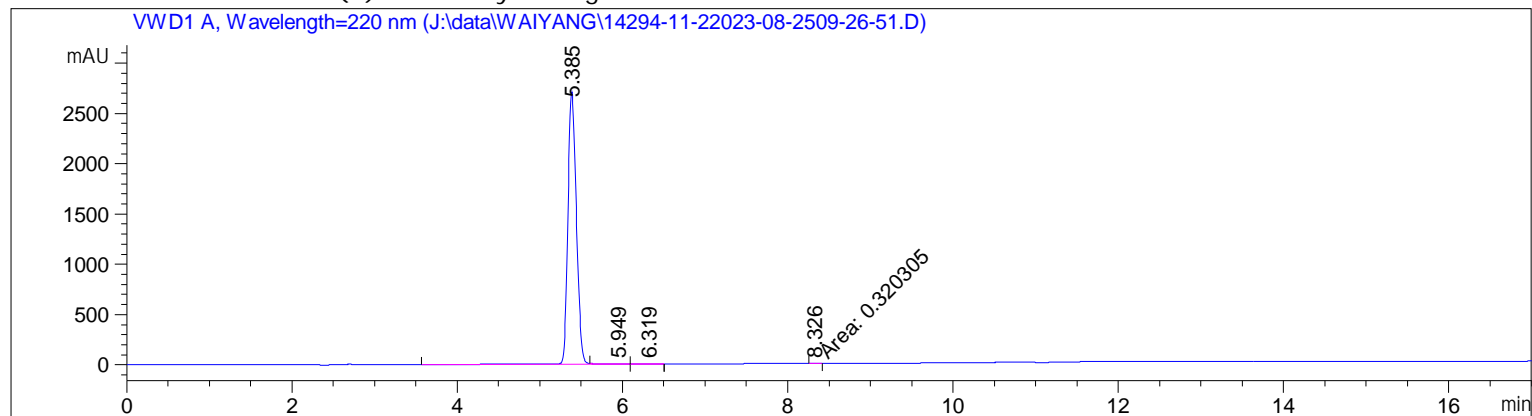


Sample Name: 14294-11-2

```

=====
Acq. Operator   : SYSTEM
Sample Operator : SYSTEM
Acq. Instrument : 1260                      Location  : P2-C-01
Injection Date  : 8/25/2023 11:22:24
                                           Inj Volume : 1.000 µl
Different Inj Volume from Sample Entry! Actual Inj Volume : 2.000 µl
Acq. Method     : C:\Chem32\1\Methods\Analytical-220-254nm.M
Last changed    : 3/3/2023 10:15:48 by SYSTEM
Analysis Method : C:\CHEM32\1\METHODS\Analytical-TFA(5)-1-220-254nm-120min.M
Last changed    : 8/25/2023 10:43:33 by SYSTEM
                                           (modified after loading)
Additional Info : Peak(s) manually integrated
    
```



Area Percent Report

```

Sorted By      : Signal
Multiplier     : 1.0000
Dilution       : 1.0000
Sample Amount  : 1.00000 [ng/ul] (not used in calc.)
Use Multiplier & Dilution Factor with ISTDs
    
```

Signal 1: VWD1 A, Wavelength=220 nm

Peak #	RetTime [min]	Type	Width [min]	Area [mAU*s]	Height [mAU]	Area %
1	5.385	BV R	0.1099	1.94603e4	2707.31201	99.6715
2	5.949	VV E	0.2618	40.77526	2.03498	0.2088
3	6.319	VB E	0.1592	23.03264	1.98815	0.1180
4	8.326	MM	0.0574	3.20305e-1	9.29826e-2	1.641e-3

Sample Name: 14294-11-2

Peak #	RetTime [min]	Type	Width [min]	Area [mAU*s]	Height [mAU]	Area %
Totals :				1.95245e4	2711.42813	

Signal 2: VWD1 B, Wavelength=254 nm

Peak #	RetTime [min]	Type	Width [min]	Area [mAU*s]	Height [mAU]	Area %
1	5.389	BV R	0.1206	2.30036e4	3029.79907	99.8523
2	5.949	VB E	0.1378	18.37363	1.95187	0.0798
3	9.104	MM	0.1951	15.65644	1.33769	0.0680
Totals :				2.30377e4	3033.08863	

=====
*** End of Report ***